



LOGIQ V5 Expert

Hand in hand for a healthier world

Imagination at work.

Simplicity and support go hand in hand



The LOGIQ™ V5 Expert system helps enhance diagnostic confidence and efficiency with:

- Great image quality
- Onboard protocol support
- Automated workflow
- Upgradable functionality

LOGIQ V5 Expert is an affordable approach to advanced ultrasound technology that will grow with your practice.



Versatility and diagnostic confidence go hand in hand



The LOGIQ™ V5 Expert system supports a wide range of applications, including abdominal, vascular, obstetrics, and pediatrics.

LOGIQ V5 Expert helps to enhance your confidence while making ultrasound ownership simple and affordable.



Contents

1. Work with ease

2. Image with confidence

3. One system, many uses

4. Count on GE reliability



1. Work with ease

Users of different experience levels will find LOGIQ V5 Expert simple and easy to operate. The intuitive workflow features logical exam flow, automation tools, and onboard clinical information.

- On-board reference tools
 - Scan Coach
 - Scan Assistant
- SonoBiometry
- 3D Imaging





On-board reference tools

Available on-demand during live scanning, these tools walk users through guideline-based exams to support confident, efficient scanning:

- Scan Assistant
- Scan Coach

1) What is Scan Assistant/Scan Coach?

* AIUM, ISUOG, ACOG

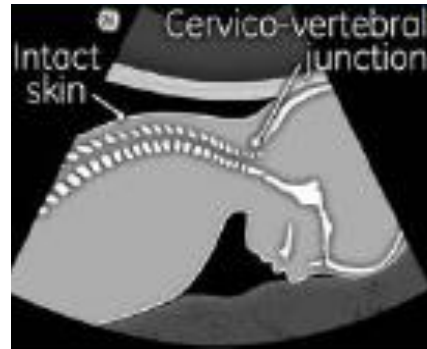


Scan Coach

Scan Coach is an innovative reference tool, available on demand during live scanning to help acquire the desired scan plane for obstetric, gynecological and abdominal protocols.



3D animation shows the ultrasound beam within the anatomy for excellent visualization



Schematic drawing shows select anatomical landmarks on the target scan plane



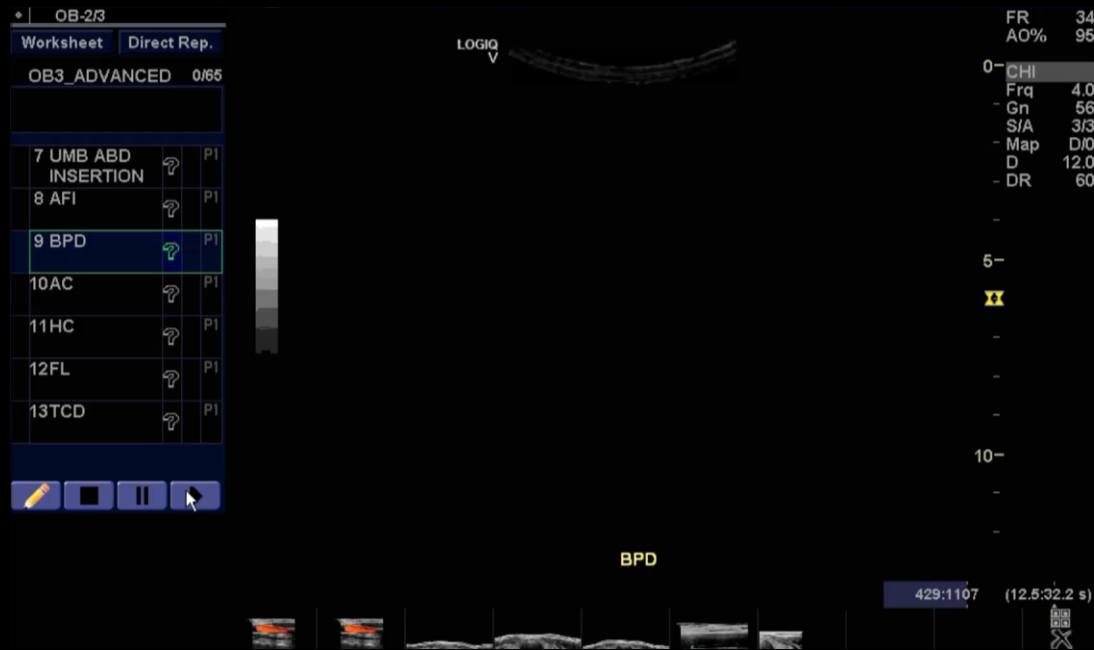
Reference clinical images show the target scan plane

Scan Coach

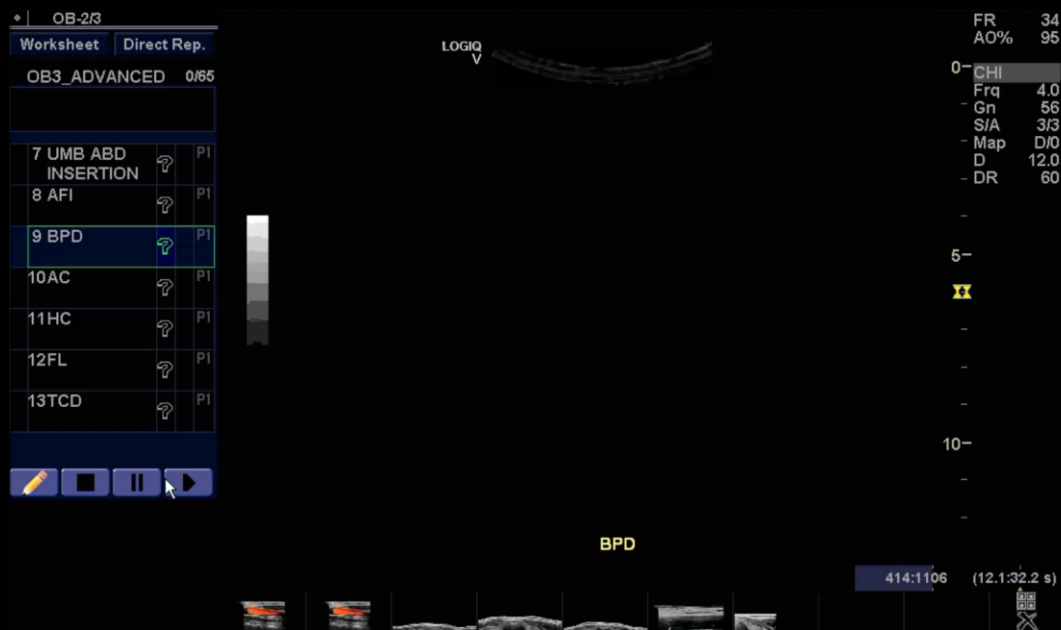
- Reference image to compare to live image
- Anatomical reference for specific area of the body you are scanning
- Short video on transducer placement and orientation
- Available protocols:
 1. Cardiac
 2. Carotid
 3. Obstetrics
 4. Gynecology
 5. Abdomen
- User-selectable through Scan Assistant



Scan Assistant /Scan Coach: OB2 Advanced



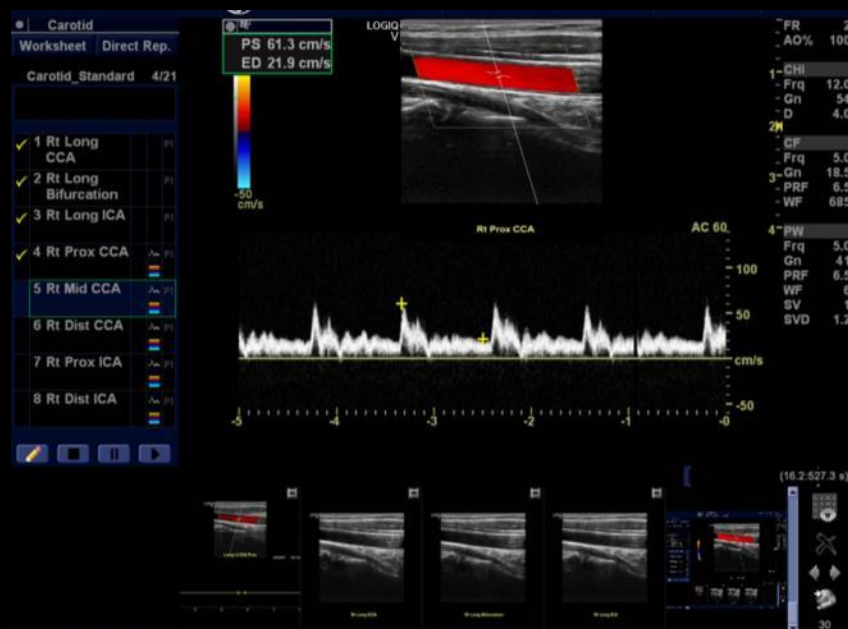
Scan Assistant /Scan Coach: Abd Advanced



Scan Assistant

A guidelines*-based exam protocol that reminds you of key anatomical landmarks to be covered in a given protocol to help you increase your clinical confidence.

- Provides basic and advanced protocols for obstetric, gynecological and abdominal scans
- Helps reduce the chances of missing steps during an exam



Instructional videos

The videos demonstrate hands-on methodology, and how to use key hardware and software advanced features.

- Getting started with LOGIQ V5 Expert
- Using key workflow features
- Using Scan Assistant and Scan Coach
- Leveraging TruScan™ Architecture
- Using SonoBiometry



Grow your expertise with product training, taught by experts,
for the knowledge and confidence to provide quality patient care.



My Trainer

On-board product training modules help accelerate user operational confidence

Welcome to My Trainer!
For LOGIQ V5

Getting started **BookMark**

Circuit breaker

Probe Connection

Touch Panel


System setting

Peripheral connection

Maintenance

EXIT

Probe Connection **AddBookmark**



Description
Align the connector with the probe port and carefully push into place with the cable facing the upper of the system. Flip the connector locking lever right.



SonoBiometry

Automated fetal measurements

Automates four routine fetal biometry measurements: BPD, HC, AC and FL

- Automatically places calipers to help enhance clinical workflow by reducing keystrokes
- Provides operator-independent measurements, with choice to edit, discard and manually re-measure.



Enhance clinical workflow by helping reduce keystrokes to perform biometry measurements.

Static 3D



With GE leading technology, acquire 2D and volume imaging with the 3D transducer

- Easy, quick, reproducible
- High volume data accuracy
- Imaging parameters settings

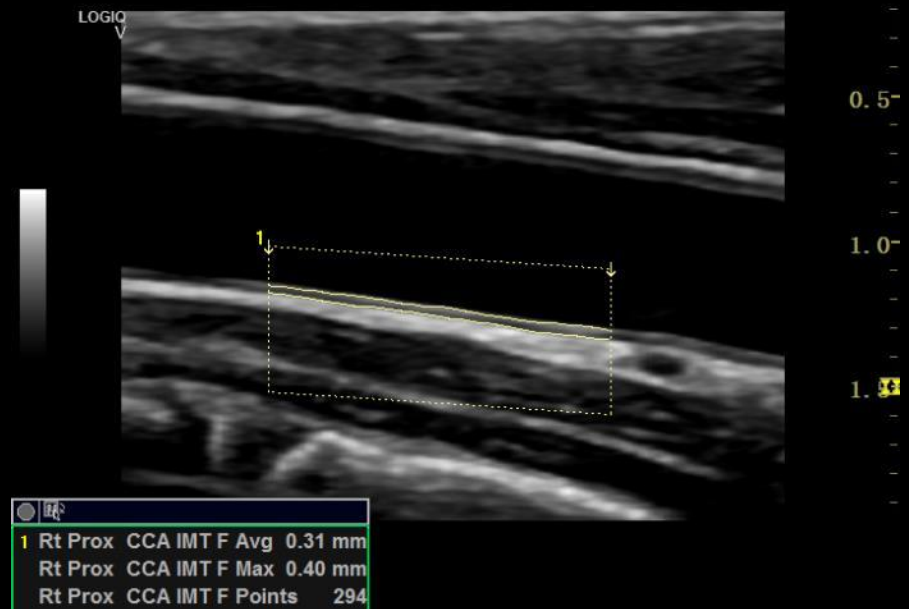
Visualization Modes:

- 3D rendering and sectional planes
- Render mode
- Surface texture, Surface Smooth, X-ray and Mix Mode

Helps enhance your ability to view the shape of the structure you are imaging with 3D/4D

Auto IMT

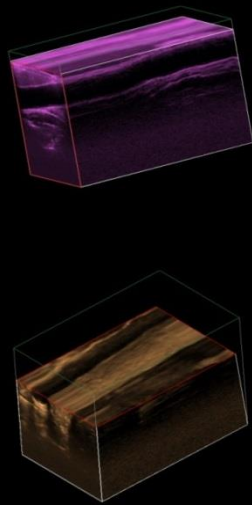
- Simple and easy workflow for analysis of the carotid artery with minimal keystrokes
- Direct export to a worksheet and report page
- Save offset distance and IMT measurements to help increase reproducibility



Streamline IMT workflow to help users detect cardiovascular disease early and improve patient outcomes.

Easy 3D Technology

- Acquire 3D data sets without oversampling or drop-out with careful scanning with a smooth, linear translation, or sector sweep.
- Enables quantitative measurements without assuming simplified geometrical models



Using the same procedure as 2D imaging, LOGIQ V5 Expert quickly generates and allows you to manipulate 3D volumetric cubes to help with diagnostic precision and effective workflow.



Customizable user interface and image quality parameters

- Adjust IQ parameters quickly and easily with five top menu knobs and page up/page down
- Customize the scrollable system menu by choosing from 15 IQ parameters
- Set user-defined keys based on workflow needs and preferences

Customization of IQ Parameters



[Click to play video](#)

Contents

1. Work with ease

2. Image with confidence

3. One system, many uses

4. Count on GE reliability



2. Image with confidence

The LOGIQ V5 Expert continues to add advanced technologies that help enhance your diagnostic confidence by delivering clear, high-quality images.





Auto Optimization

Auto Optimization enables optimized image quality at the touch of a button. The system automatically adjusts parameters and image quality factors such as CrossXBeam™ and SRI-HD.



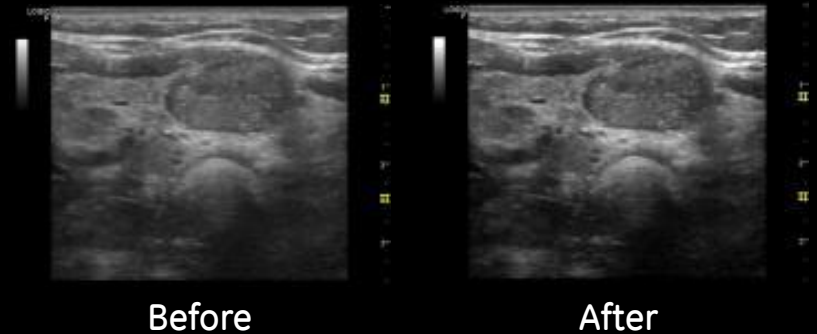
Auto Optimization



One Button Press

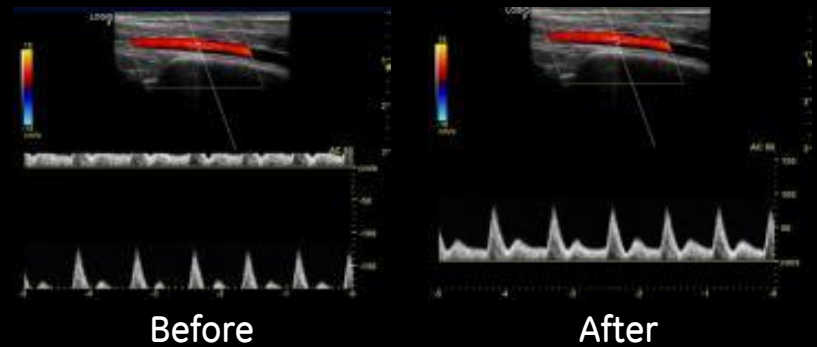
ATO (Auto Tissue Optimization)

Optimize B-Mode image to improve contrast resolution



ASO (Auto Spectral Optimization)

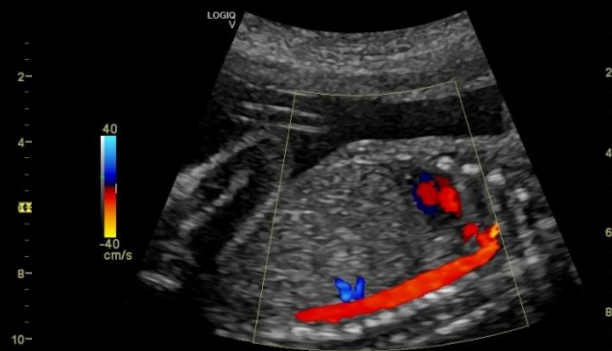
Baseline, Invert, PRF (on live image) and Angle correction



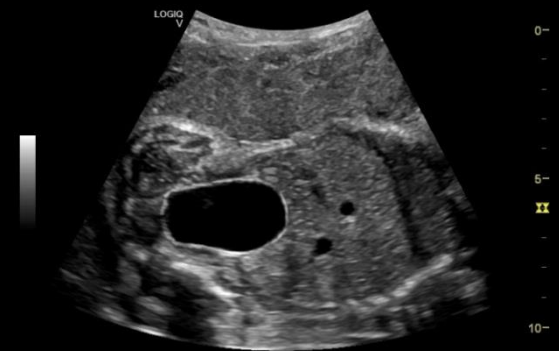
Obstetric and gynecological images



Fetal Heart: Four Chamber View



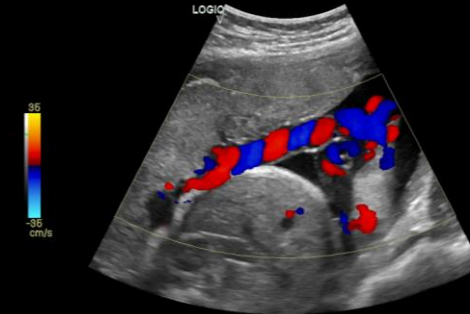
Color Flow- Fetal Aorta



Fetal Abdomen and Bladder



Uterus



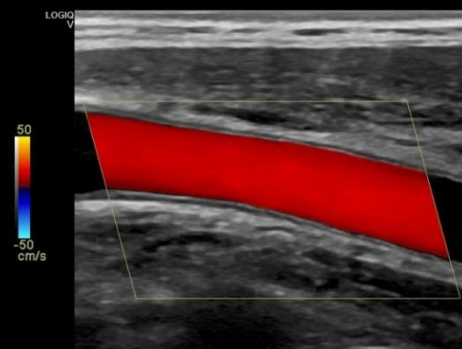
Umbilical cord with color Doppler



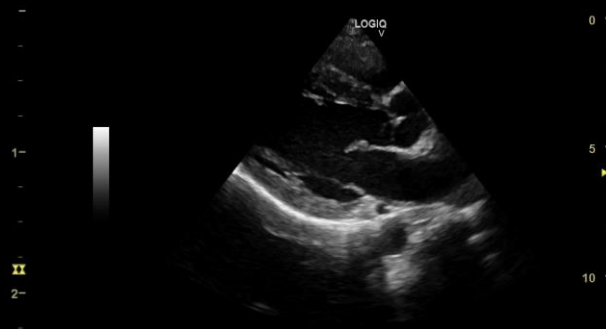
General Imaging



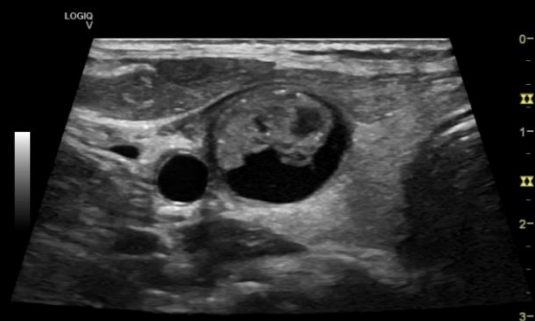
B Mode – Pancreas and Pancreatic Duct



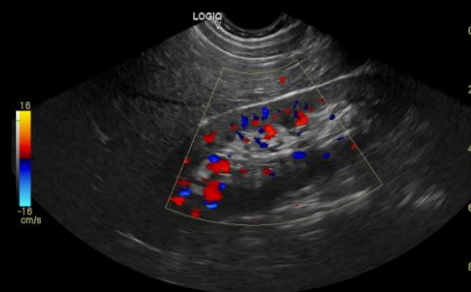
Color Flow- Carotid



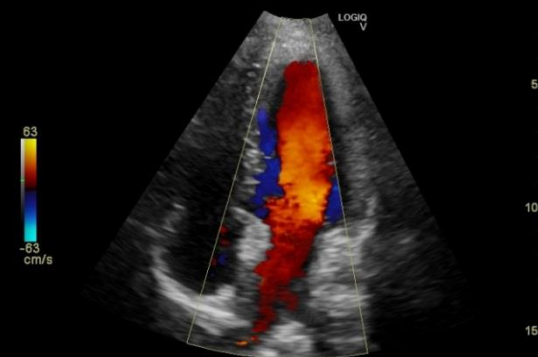
Pediatric heart



Virtual Convex - Colloid Nodule in Thyroid



Pediatric renal



Adult Cardiac – Four Chamber View





Premium Imaging software

- Coded Phase Inversion Harmonic Imaging
- CrossXBeam™ Spatial Compounding
- Speckle Reduction Imaging (SRI)
- Multiple Line Acquisition
- Auto Optimization
- Pulse Wave and Power Doppler
- LOGIQ View

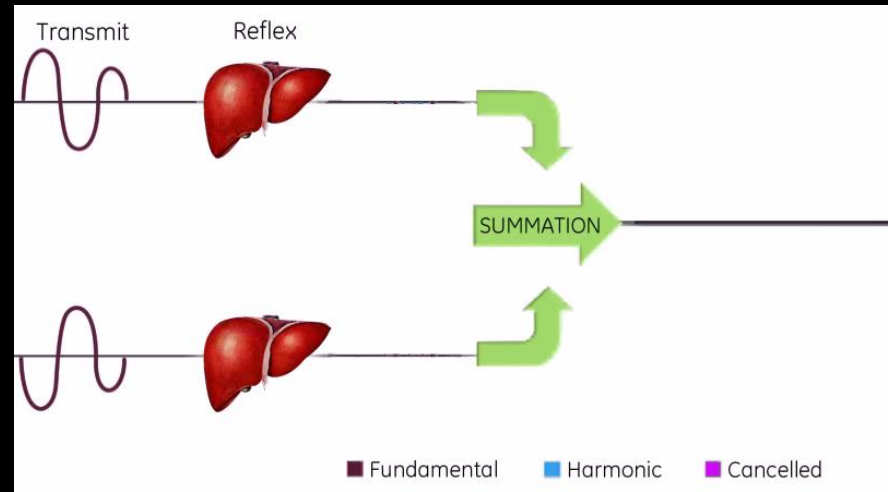


CrossXBeam is a trademark of General Electric Company.

Coded Phase Inversion Harmonic Imaging

Provides excellent near-field resolution and penetration to help improve small-parts imaging

- Helps increase SNR (Signal-Noise Ratio)
- Helps improve signal penetration
- Helps maintain a high axial resolution at greater distances without increasing the peak transmitted power



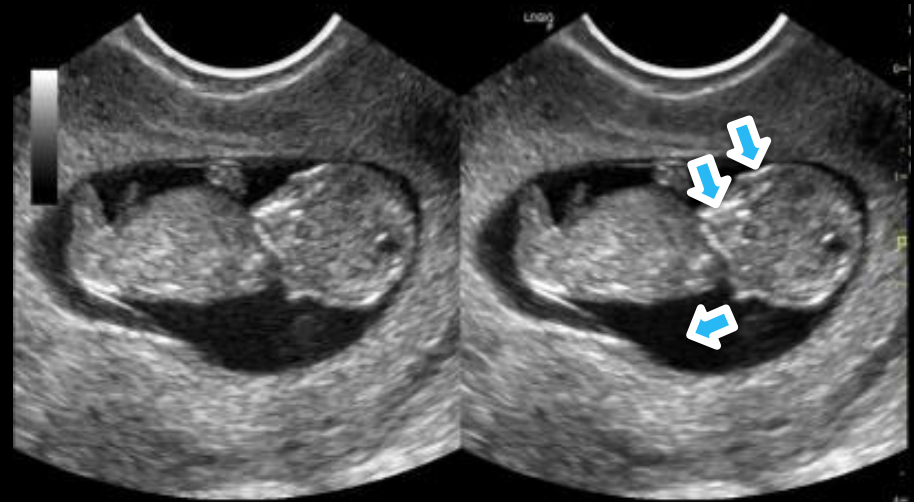
Coded Phase Inversion Harmonic Imaging helps improve the image quality and the amount of information obtained during the examination.

CrossXBeam

Spatial compounding imaging

Clinical benefits¹

- Improved image contrast for greater tissue differentiation
- Improved visualization of borders and interfaces
- Reduced clutter artifact, to help with difficult-to-scan patients
- Enhanced biopsy needle visualization



Fundamental

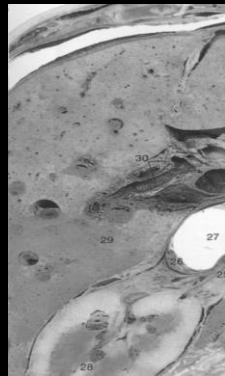
With CrossXBeam

¹Comparison with fundamental B-Mode

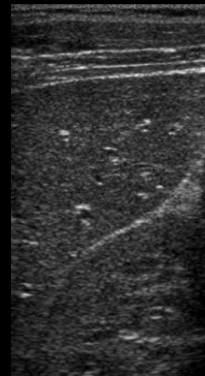
Speckle Reduction Imaging (SRI-HD)

An adaptive, real-time software algorithm that smoothens images along preferred edge direction without smoothing out the overlap area across the edge, to help increase diagnostic confidence.

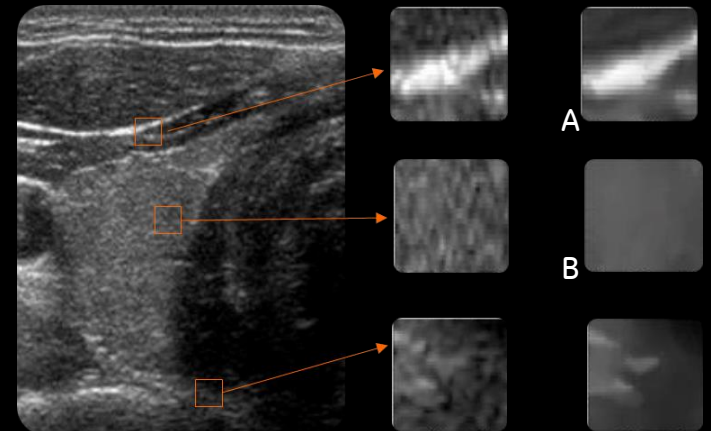
GE's SRI is



Optical image
of liver



Ultrasound
image of liver

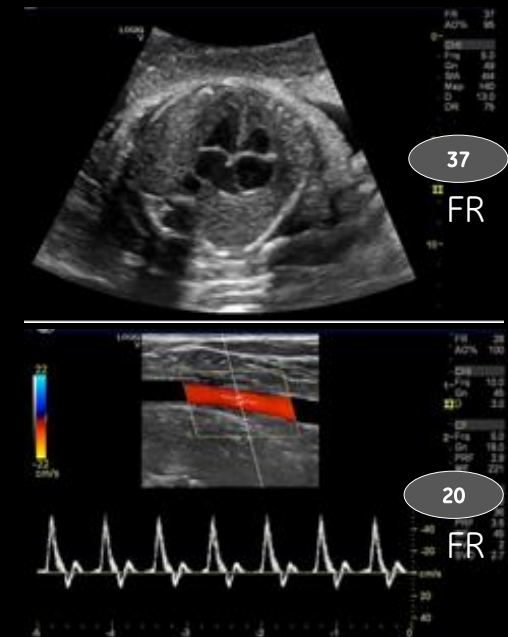
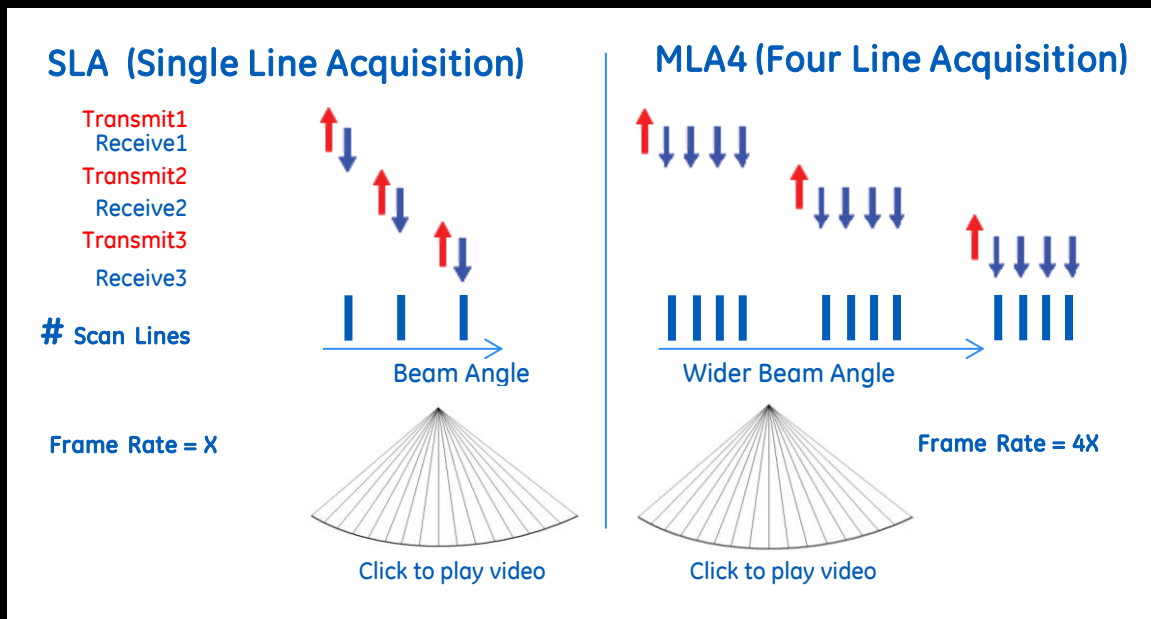


A Inter-tissue cross over is not smoothed
B Intra-tissue speckles are smoothed

Helps increase clinical confidence in various imaging modes by enhancing visualization of borders and interfaces. This helps clarify tissue differentiation, reduces clutter artifact, and enhances biopsy needle visualization.

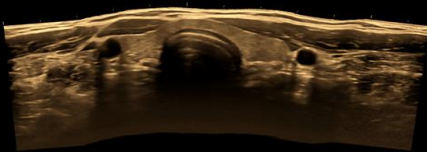
Multiple Line Acquisition

LOGIQ V5 Expert processes each echo along four simultaneous receiver beams, increasing frame rate fourfold. This delivers more data and makes it easy to view moving structures and blood flow.



LOGIQ View

- LOGIQ View delivers real-time representation of long anatomical structures that might not be seen in a single image
- Available with all probes
 - Combine with CrossXBeam™ when using linear probe
 - Auto detection of scan direction
 - Up to 60cm scan length



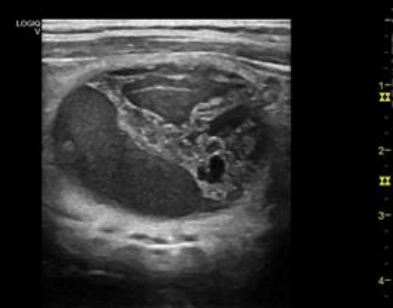
[Click to play video](#)

Lesions and their anatomical relationships can be viewed in a single frame, facilitating depiction and measurement of large structures.



Virtual Convex

- Provides an expanded (convex) field-of-view on linear and sector probes
- Compatible with CrossXBeam™
- Available on linear and sector transducers



Original View



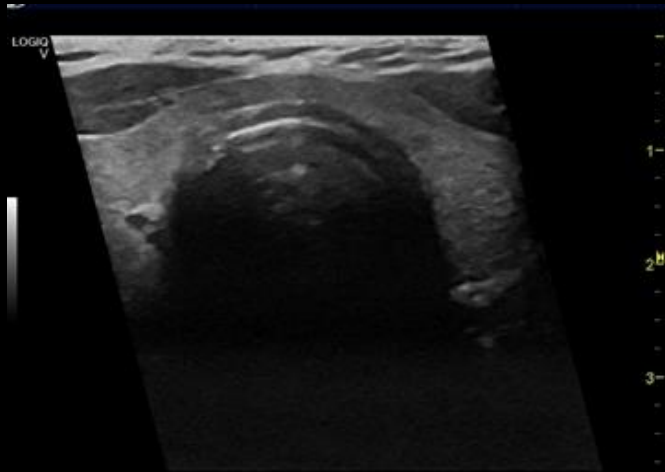
Larger FOV with Virtual Convex



Click to play video

B-Steer

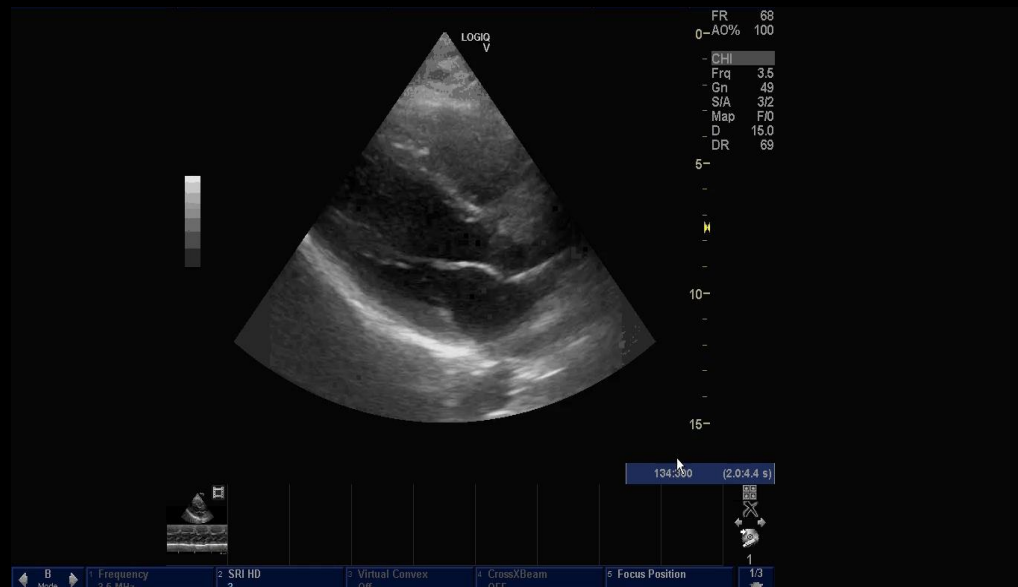
- Enables enhanced visualization of needle during interventional procedures and helps to improve diagnostic confidence in case of anisotropy in musculoskeletal
- Available on linear probe
- Quick one-button operation



[Click to play video](#)

Anatomical M-Mode

- Helps measure accurately and evaluate motion by correcting for off-axis orientation in situations when the heart is not positioned or shaped normally
- Cardiac assessment that includes an M-Mode cursor adjustable at different planes to be vertical to myocardium
- Compatible with Live image, Stored image – Raw data and Color flow mode



Click to play video

ECG module

Enables ECG mapping to be
visualized alongside corresponding
ultrasound image

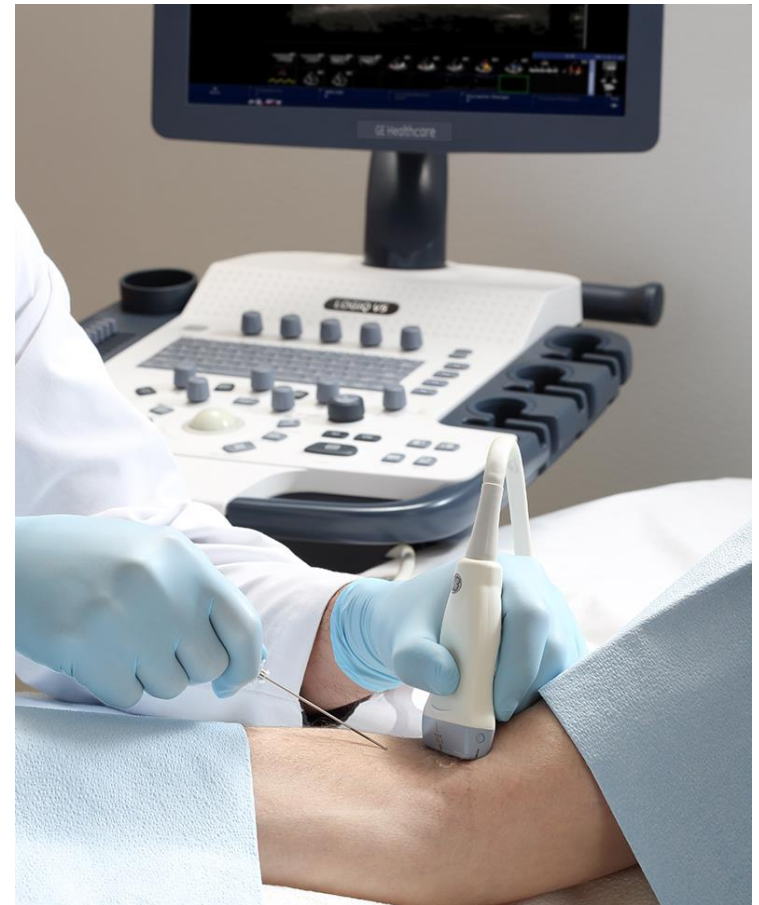
- Image cardiac with ECG mapping



Needle Recognition

Provides precise and accurate display of the needle, anatomy and motion even in Color and Power Doppler.

- Harnesses pattern recognition technology
- No distortion of the needle or compromise to the target
- Can adjust needle gain and angle



Contents

1. Work with ease

2. Image with confidence

3. One system, many uses

4. Count on GE reliability



3. One system, many uses

The compact, lightweight LOGIQ V5 Expert system helps address most of your ultrasound scanning needs. It fits easily into tight spaces, making it ideal for clinics and limited scanning areas.

- Wide range of probes
- Wireless connectivity
- Multiple probe ports
- Large color monitor option
- I/O (input / output) ports included





Probe Family

Wide range of probes –Tailored for your clinical needs and preferences



Ergonomics and footprint

Designed for user comfort and efficiency

- 15" LCD screen with 4-way tilting
- 3 conveniently placed probe holders
- 3 active ports and 1 parking port
- Easily fits narrow room spaces
- Lightweight and easy to transport
- Wireless connectivity

Compact size and ergonomic design helps ease of use and helps improve workflow



Contents

1. Work with ease

2. Image with confidence

3. One system, many uses

4. Count on GE reliability



4. Count on GE reliability

Multi-year warranty, modular design, and rugged GE engineering help maintain system performance giving you value and peace of mind right from the start.

- 3-year warranty – Comprehensive service coverage (console and probes) included in package with low total ownership cost*
- Wide service coverage – GE qualified service providers provide standard service across globe, from urban centers to rural areas*
- Responsiveness – Easy to maintain design, getting you back to scanning quickly
- My Trainer – On-board training modules
- Remote diagnostics.

*Check for availability in your region





3-year Warranty

Comprehensive service coverage (console and probes)
included in package with low total ownership cost



Smart economics

affordable total cost of ownership

- Backed by multiple years of comprehensive service coverage, LOGIQ V5 Expert is designed for fast service and a quick repair process
- Affordable price
- Higher system up-time with modular-based fast service
- Three years of no-cost extended warranty with comprehensive coverage

Comprehensive
service coverage
with a no-cost
extended
warranty





Wide Service Coverage

GE direct service team and qualified service providers bring standard service across globe, from urban centers to rural areas





Responsiveness

Easy to maintain design for fast failure diagnosis and quick repairing, getting you back to scanning quickly





Remote diagnosis: InSite Exc

Initiate diagnostics and auto-service requests right from the console to help maximize system performance, using remote diagnostics migrated from our flagship systems and enabled by InSite ExC



